



Certificate of Analysis

CANNABUSINESS LABORATORIES, LLC

Customer:

Treatibles
6339 Charlotte Pike #914
Nashville, TN 37209

Sample ID **240216007**
Order Number **CB240216003**
Sample Name **Treatibles Equine**

External Sample ID

Batch Number **TRT1500-021524**

Received Date **2/16/2024**
COA Released **2/22/2024**

Product Type **Edible**
Sample Type **Edible**

Comments

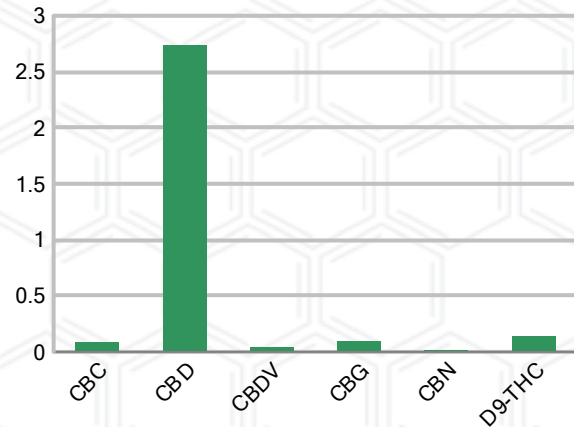
CANNABINOID PROFILE

Analyte	LOQ (%)	% Weight	mg/mL
CBC	0.01	0.083	0.775
CBD	0.01	2.737	25.45
CBDa	0.01	ND	ND
CBDV	0.01	0.037	0.348
CBG	0.01	0.097	0.899
CBGa	0.01	ND	ND
CBN	0.01	0.013	0.121
d8-THC	0.01	ND	ND
d9-THC	0.01	0.137	1.275
THCa	0.01	ND	ND
Total Cannabinoids		3.104	28.87
Total Potential THC		0.137	1.275
Total Potential CBD		2.737	25.45
Total Potential CBG		0.097	0.899
Ratio of Total Potential CBD to Total Potential THC			19.98 : 1
Ratio of Total Potential CBG to Total Potential THC			0.71 : 1

SAMPLE IMAGE



CANNABINOIDS % Weight



*Total Cannabinoids refers to the sum of all cannabinoids detected.

*Total Potential CBD = (0.877 x CBDa) + CBD. *Total Potential THC = (0.877 x THCa) + THC. *Total Potential CBG = (0.877 x CBGa) + CBG.

*Total Potential THC/CBD are calculated to take into account the loss of an acid group during decarboxylation.



J. Hobgood
Laboratory Manager

SIGNATURE

Jamie Hobgood

LABORATORY MANAGER

02/22/2024 1:07 PM

DATE

This product has been tested by CannaBusiness Laboratories using validated testing methodologies and a quality system. Values reported relate only to the product tested. CannaBusiness Laboratories makes no claims as to the efficacy, safety, or other risks associated with any detected or non-detected levels of any compounds reported herein. This Certificate shall not be reproduced except in full, without the written permission of CannaBusiness Laboratories. Photo is of sample received by the lab and may vary from final packaging. The results apply to the sample as received.





Certificate of Analysis

CANNABUSINESS LABORATORIES, LLC

Customer

Treatibles
6339 Charlotte Pike #914
Nashville, TN 37209



Sample Name: Treatibles Equine

Sample ID: 240216007

Order Number: CB240216003

Product Type: Edible

Sample Type: Edible

Received Date: 02/16/2024

Batch Number: TRT1500-021524

COA released: 02/22/2024 1:07 PM

Potency (mg/mL)			
Date Tested: 02/21/2024		Method: CB-SOP-028	
Instrument:			
0.137 %	2.737 %	3.104 %	28.87 mg/mL
Total THC	Total CBD	Total Cannabinoids	Total Cannabinoids

Analyte	Result	Units	LOQ	Result	Units
CBC (Cannabichromene)	0.083	%	0.010	0.775	mg/mL
CBD (Cannabidiol)	2.737	%	0.010	25.45	mg/mL
CBDa (Cannabidiolic Acid)	ND	%	0.010	ND	mg/mL
CBDV (Cannabidivarin)	0.037	%	0.010	0.348	mg/mL
CBG (Cannabigerol)	0.097	%	0.010	0.899	mg/mL
CBGa (Cannabigerolic Acid)	ND	%	0.010	ND	mg/mL
CBN (Cannabinol)	0.013	%	0.010	0.121	mg/mL
D8-THC (D8-Tetrahydrocannabinol)	ND	%	0.010	ND	mg/mL
D9-THC (D9-Tetrahydrocannabinol)	0.137	%	0.010	1.275	mg/mL
THCa (Tetrahydrocannabinolic Acid)	ND	%	0.010	ND	mg/mL



J. Hobgood
Laboratory Manager

Jamie Hobgood

02/22/2024 1:07 PM

SIGNATURE

DATE

NT = Not tested, ND = Not detected; LOQ = Limit of Quantitation; <LOQ = Detected; >ULOL = Above upper limit of linearity; CFU/g = Colony forming units per 1 gram; TNTC = Too numerous to count

This product has been tested by CannaBusiness Laboratories using validated testing methodologies and a quality system. Values reported relate only to the product tested. CannaBusiness Laboratories makes no claims as to the efficacy, safety, or other risks associated with any detected or non-detected levels of any compounds reported herein. This Certificate shall not be reproduced except in full, without the written permission of CannaBusiness Laboratories. Photo is of sample received by the lab and may vary from final packaging. The results apply to the sample as received.