



Certificate of Analysis

CANNABUSINESS LABORATORIES, LLC

Customer:

Treatibles
6339 Charlotte Pike #914

Nashville, TN 37209

Received Date **8/30/2023**

COA Released **9/1/2023**

Comments

Sample ID **230830012**

Order Number **CB230830007**

Sample Name **Treatibles Equine 1500mg
Tincture**

External Sample ID

Batch Number **TRT1500-090123**

Product Type **Edible**

Sample Type **Edible**

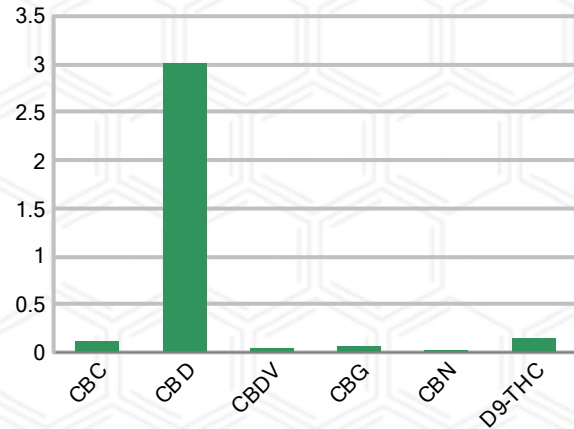
CANNABINOID PROFILE

Analyte	LOQ (%)	% Weight	mg/mL
CBC	0.01	0.116	1.080
CBD	0.01	3.015	28.04
CBDa	0.01	ND	ND
CBDV	0.01	0.039	0.360
CBG	0.01	0.064	0.595
CBGa	0.01	ND	ND
CBN	0.01	0.027	0.254
d8-THC	0.01	ND	ND
d9-THC	0.01	0.151	1.401
THCa	0.01	ND	ND
Total Cannabinoids		3.412	31.73
Total Potential THC		0.151	1.401
Total Potential CBD		3.015	28.04
Total Potential CBG		0.064	0.595
Ratio of Total Potential CBD to Total Potential THC			19.97 : 1
Ratio of Total Potential CBG to Total Potential THC			0.42 : 1

SAMPLE IMAGE



CANNABINOIDS % Weight



*Total Cannabinoids refers to the sum of all cannabinoids detected.

*Total Potential CBD = (0.877 x CBDa) + CBD. *Total Potential THC = (0.877 x THCa) + THC. *Total Potential CBG = (0.877 x CBGa) + CBG.

*Total Potential THC/CBD are calculated to take into account the loss of an acid group during decarboxylation.



J. Hobgood
Laboratory Manager

SIGNATURE

Jamie Hobgood

LABORATORY MANAGER

09/01/2023 11:33 AM

DATE

This product has been tested by CannaBusiness Laboratories using validated testing methodologies and a quality system. Values reported relate only to the product tested. CannaBusiness Laboratories makes no claims as to the efficacy, safety, or other risks associated with any detected or non-detected levels of any compounds reported herein. This Certificate shall not be reproduced except in full, without the written permission of CannaBusiness Laboratories. Photo is of sample received by the lab and may vary from final packaging. The results apply to the sample as received.



Certificate of Analysis

CANNABUSINESS LABORATORIES, LLC

Customer

Treatibles
6339 Charlotte Pike #914
Nashville, TN 37209



Sample Name: Treatibles Equine
1500mg Tincture
Sample ID: 230830012
Order Number: CB230830007
Product Type: Edible
Sample Type: Edible
Received Date: 08/30/2023
Batch Number: TRT1500-090123
COA released: 09/01/2023 11:33 AM

Potency (mg/mL)

Date Tested: 08/31/2023
Instrument:

Method: CB-SOP-028

0.151 % Total THC	3.015 % Total CBD	3.412 % Total Cannabinoids	31.73 mg/mL Total Cannabinoids
-----------------------------	-----------------------------	--------------------------------------	--

Analyte	Result	Units	LOQ	Result	Units
CBC (Cannabichromene)	0.116	%	0.010	1.080	mg/mL
CBD (Cannabidiol)	3.015	%	0.010	28.04	mg/mL
CBDa (Cannabidiolic Acid)	ND	%	0.010	ND	mg/mL
CBDV (Cannabidivarin)	0.039	%	0.010	0.360	mg/mL
CBG (Cannabigerol)	0.064	%	0.010	0.595	mg/mL
CBGa (Cannabigerolic Acid)	ND	%	0.010	ND	mg/mL
CBN (Cannabinol)	0.027	%	0.010	0.254	mg/mL
D8-THC (D8-Tetrahydrocannabinol)	ND	%	0.010	ND	mg/mL
D9-THC (D9-Tetrahydrocannabinol)	0.151	%	0.010	1.401	mg/mL
THCa (Tetrahydrocannabinolic Acid)	ND	%	0.010	ND	mg/mL



J. Hobgood
Laboratory Manager

Jamie Hobgood

09/01/2023 11:33 AM

SIGNATURE

DATE

NT = Not tested, ND = Not detected; LOQ = Limit of Quantitation; <LOQ = Detected; >ULOL = Above upper limit of linearity; CFU/g = Colony forming units per 1 gram; TNTC = Too numerous to count

This product has been tested by CannaBusiness Laboratories using validated testing methodologies and a quality system. Values reported relate only to the product tested. CannaBusiness Laboratories makes no claims as to the efficacy, safety, or other risks associated with any detected or non-detected levels of any compounds reported herein. This Certificate shall not be reproduced except in full, without the written permission of CannaBusiness Laboratories. Photo is of sample received by the lab and may vary from final packaging. The results apply to the sample as received.