



Certificate of Analysis

CANNABUSINESS LABORATORIES, LLC

Customer:

Treatibles
6339 Charlotte Pike #914
Nashville, TN 37209

Sample ID **230616035**
Order Number **CB230616006**
Sample Name **Treatibles Equine 1500mg**

Received Date **6/16/2023**
COA Released **6/16/2023**

External Sample ID

Batch Number **TRT1500-060123**
Product Type **Edible**
Sample Type **Edible**

Comments

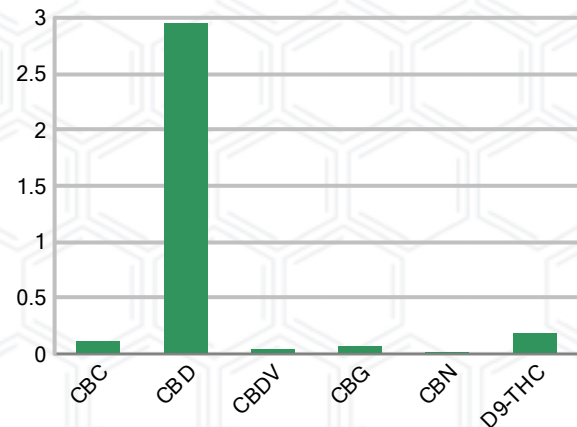
CANNABINOID PROFILE

Analyte	LOQ (%)	% Weight	mg/mL
CBC	0.01	0.113	1.049
CBD	0.01	2.952	27.45
CBDa	0.01	ND	ND
CBDV	0.01	0.041	0.380
CBG	0.01	0.069	0.645
CBGa	0.01	ND	ND
CBN	0.01	0.013	0.118
d8-THC	0.01	ND	ND
d9-THC	0.01	0.181	1.682
THCa	0.01	ND	ND
Total Cannabinoids		3.368	31.32
Total Potential THC		0.181	1.682
Total Potential CBD		2.952	27.45
Total Potential CBG		0.069	0.645
Ratio of Total Potential CBD to Total Potential THC			16.31 : 1
Ratio of Total Potential CBG to Total Potential THC			0.38 : 1

SAMPLE IMAGE



CANNABINOIDS % Weight



*Total Cannabinoids refers to the sum of all cannabinoids detected.

*Total Potential CBD = (0.877 x CBDa) + CBD. *Total Potential THC = (0.877 x THCa) + THC. *Total Potential CBG = (0.877 x CBGa) + CBG.

*Total Potential THC/CBD are calculated to take into account the loss of an acid group during decarboxylation.



J. Hobgood
Laboratory Manager

SIGNATURE

Jamie Hobgood

LABORATORY MANAGER

06/16/2023 7:27 PM

DATE

This product has been tested by Cannabusiness Laboratories using validated testing methodologies and a quality system. Values reported relate only to the product tested. Cannabusiness Laboratories makes no claims as to the efficacy, safety, or other risks associated with any detected or non-detected levels of any compounds reported herein. This Certificate shall not be reproduced except in full, without the written permission of Cannabusiness Laboratories. Photo is of sample received by the lab and may vary from final packaging. The results apply to the sample as received.



Certificate of Analysis

CANNABUSINESS LABORATORIES, LLC

Customer

Treatibles
6339 Charlotte Pike #914
Nashville, TN 37209



Sample Name: Treatibles Equine
1500mg
Sample ID: 230616035
Order Number: CB230616006
Product Type: Edible
Sample Type: Edible
Received Date: 06/16/2023
Batch Number: TRT1500-060123
COA released: 06/16/2023 7:27 PM

Potency (mg/mL)			
Date Tested: 06/16/2023		Method: CB-SOP-028	
Instrument:			
0.181 %	2.952 %	3.368 %	31.32 mg/mL
Total THC	Total CBD	Total Cannabinoids	Total Cannabinoids

Analyte	Result	Units	LOQ	Result	Units
CBC (Cannabichromene)	0.113	%	0.010	1.049	mg/mL
CBD (Cannabidiol)	2.952	%	0.010	27.45	mg/mL
CBDa (Cannabidiolic Acid)	ND	%	0.010	ND	mg/mL
CBDV (Cannabidivarin)	0.041	%	0.010	0.380	mg/mL
CBG (Cannabigerol)	0.069	%	0.010	0.645	mg/mL
CBGa (Cannabigerolic Acid)	ND	%	0.010	ND	mg/mL
CBN (Cannabinol)	0.013	%	0.010	0.118	mg/mL
D8-THC (D8-Tetrahydrocannabinol)	ND	%	0.010	ND	mg/mL
D9-THC (D9-Tetrahydrocannabinol)	0.181	%	0.010	1.682	mg/mL
THCa (Tetrahydrocannabinolic Acid)	ND	%	0.010	ND	mg/mL



J. Hobgood
Laboratory Manager

Jamie Hobgood

06/16/2023 7:27 PM

SIGNATURE

DATE

NT = Not tested, ND = Not detected; LOQ = Limit of Quantitation; <LOQ = Detected; >ULOL = Above upper limit of linearity; CFU/g = Colony forming units per 1 gram; TNTC = Too numerous to count

This product has been tested by CannaBusiness Laboratories using validated testing methodologies and a quality system. Values reported relate only to the product tested. CannaBusiness Laboratories makes no claims as to the efficacy, safety, or other risks associated with any detected or non-detected levels of any compounds reported herein. This Certificate shall not be reproduced except in full, without the written permission of CannaBusiness Laboratories. Photo is of sample received by the lab and may vary from final packaging. The results apply to the sample as received.