



Certificate of Analysis

CANNABUSINESS LABORATORIES, LLC

Customer:

Treatibles
6339 Charlotte Pike #914
Nashville, TN 37209

Sample ID **230616033**
Order Number **CB230616006**
Sample Name **Treatibles 250mg**

Received Date **6/16/2023**
COA Released **6/16/2023**

External Sample ID

Batch Number **060123-02**
Product Type **Edible**
Sample Type **Edible**

Comments

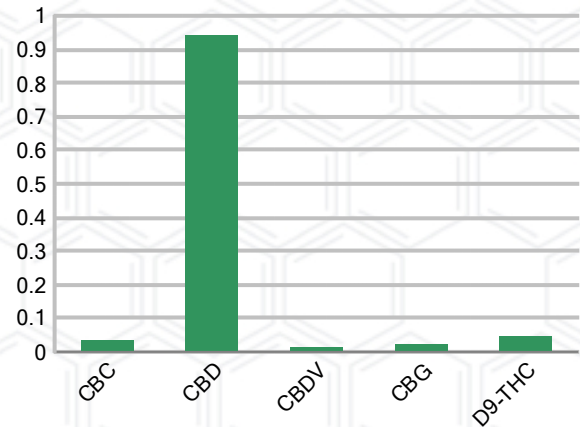
CANNABINOID PROFILE

Analyte	LOQ (%)	% Weight	mg/mL
CBC	0.01	0.034	0.313
CBD	0.01	0.943	8.770
CBDa	0.01	ND	ND
CBDV	0.01	0.013	0.124
CBG	0.01	0.022	0.203
CBGa	0.01	ND	ND
CBN	0.01	ND	ND
d8-THC	0.01	ND	ND
d9-THC	0.01	0.045	0.415
THCa	0.01	ND	ND
Total Cannabinoids		1.056	9.824
Total Potential THC		0.045	0.415
Total Potential CBD		0.943	8.770
Total Potential CBG		0.022	0.203
Ratio of Total Potential CBD to Total Potential THC			20.96 : 1
Ratio of Total Potential CBG to Total Potential THC			0.49 : 1

SAMPLE IMAGE



CANNABINOIDS % Weight



*Total Cannabinoids refers to the sum of all cannabinoids detected.

*Total Potential CBD = (0.877 x CBDa) + CBD. *Total Potential THC = (0.877 x THCa) + THC. *Total Potential CBG = (0.877 x CBGa) + CBG.

*Total Potential THC/CBD are calculated to take into account the loss of an acid group during decarboxylation.



J. Hobgood
Laboratory Manager

SIGNATURE

Jamie Hobgood

LABORATORY MANAGER

06/16/2023 7:28 PM

DATE

This product has been tested by CannaBusiness Laboratories using validated testing methodologies and a quality system. Values reported relate only to the product tested. CannaBusiness Laboratories makes no claims as to the efficacy, safety, or other risks associated with any detected or non-detected levels of any compounds reported herein. This Certificate shall not be reproduced except in full, without the written permission of CannaBusiness Laboratories. Photo is of sample received by the lab and may vary from final packaging. The results apply to the sample as received.



Certificate of Analysis

CANNABUSINESS LABORATORIES, LLC

Customer

Treatibles
6339 Charlotte Pike #914
Nashville, TN 37209



Sample Name: Treatibles 250mg

Sample ID: 230616033

Order Number: CB230616006

Product Type: Edible

Sample Type: Edible

Received Date: 06/16/2023

Batch Number: 060123-02

COA released: 06/16/2023 7:28 PM

Potency (mg/mL)			
Date Tested: 06/16/2023		Method: CB-SOP-028	
Instrument:			
0.045 %	0.943 %	1.056 %	9.824 mg/mL
Total THC	Total CBD	Total Cannabinoids	Total Cannabinoids

Analyte	Result	Units	LOQ	Result	Units
CBC (Cannabichromene)	0.034	%	0.010	0.313	mg/mL
CBD (Cannabidiol)	0.943	%	0.010	8.770	mg/mL
CBDa (Cannabidiolic Acid)	ND	%	0.010	ND	mg/mL
CBDV (Cannabidivarin)	0.013	%	0.010	0.124	mg/mL
CBG (Cannabigerol)	0.022	%	0.010	0.203	mg/mL
CBGa (Cannabigerolic Acid)	ND	%	0.010	ND	mg/mL
CBN (Cannabinol)	ND	%	0.010	ND	mg/mL
D8-THC (D8-Tetrahydrocannabinol)	ND	%	0.010	ND	mg/mL
D9-THC (D9-Tetrahydrocannabinol)	0.045	%	0.010	0.415	mg/mL
THCa (Tetrahydrocannabinolic Acid)	ND	%	0.010	ND	mg/mL



J. Hobgood
Laboratory Manager

Jamie Hobgood

06/16/2023 7:28 PM

SIGNATURE

DATE

NT = Not tested, ND = Not detected; LOQ = Limit of Quantitation; <LOQ = Detected; >ULOL = Above upper limit of linearity; CFU/g = Colony forming units per 1 gram; TNTC = Too numerous to count

This product has been tested by CannaBusiness Laboratories using validated testing methodologies and a quality system. Values reported relate only to the product tested. CannaBusiness Laboratories makes no claims as to the efficacy, safety, or other risks associated with any detected or non-detected levels of any compounds reported herein. This Certificate shall not be reproduced except in full, without the written permission of CannaBusiness Laboratories. Photo is of sample received by the lab and may vary from final packaging. The results apply to the sample as received.