



Certificate of Analysis

CANNABUSINESS LABORATORIES, LLC

Customer:

Treatibles
6339 Charlotte Pike #914
Nashville, TN 37209

Sample ID **230309008**
Order Number **CB230309002**
Sample Name **Treatibles 750mg**

External Sample ID

Received Date **3/9/2023**
COA Released **3/20/2023**

Batch Number **030223-03**
Product Type **Edible**
Sample Type **Edible**

Comments

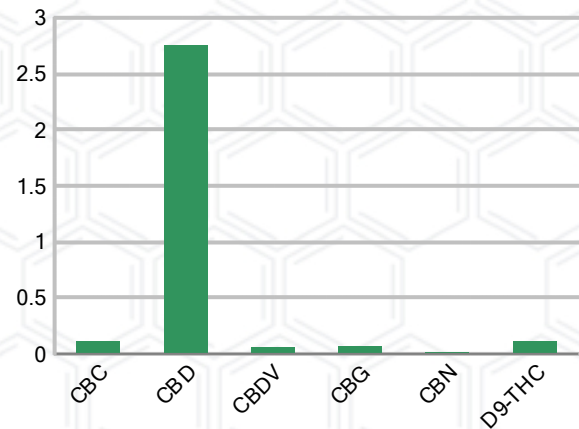
CANNABINOID PROFILE

Analyte	LOQ (%)	% Weight	mg/mL
CBC	0.01	0.110	1.019
CBD	0.01	2.751	25.58
CBDa	0.01	ND	ND
CBDV	0.01	0.059	0.548
CBG	0.01	0.062	0.579
CBGa	0.01	ND	ND
CBN	0.01	0.014	0.135
d8-THC	0.01	ND	ND
d9-THC	0.01	0.110	1.024
THCa	0.01	ND	ND
Total Cannabinoids		3.106	28.89
Total Potential THC		0.110	1.024
Total Potential CBD		2.751	25.58
Total Potential CBG		0.062	0.579
Ratio of Total Potential CBD to Total Potential THC			25.01 : 1
Ratio of Total Potential CBG to Total Potential THC			0.56 : 1

SAMPLE IMAGE



CANNABINOIDS % Weight



*Total Cannabinoids refers to the sum of all cannabinoids detected.

*Total Potential CBD = (0.877 x CBDa) + CBD. *Total Potential THC = (0.877 x THCa) + THC. *Total Potential CBG = (0.877 x CBGa) + CBG.

*Total Potential THC/CBD are calculated to take into account the loss of an acid group during decarboxylation.



J. Hobgood
Laboratory Manager

SIGNATURE

Jamie Hobgood

LABORATORY MANAGER

03/20/2023 12:06 PM

DATE

This product has been tested by CannaBusiness Laboratories using validated testing methodologies and a quality system. Values reported relate only to the product tested. CannaBusiness Laboratories makes no claims as to the efficacy, safety, or other risks associated with any detected or non-detected levels of any compounds reported herein. This Certificate shall not be reproduced except in full, without the written permission of CannaBusiness Laboratories. Photo is of sample received by the lab and may vary from final packaging. The results apply to the sample as received.



Certificate of Analysis

CANNABUSINESS LABORATORIES, LLC

Customer

Treatibles
6339 Charlotte Pike #914
Nashville, TN 37209



Sample Name: Treatibles 750mg

Sample ID: 230309008

Order Number: CB230309002

Product Type: Edible

Sample Type: Edible

Received Date: 03/09/2023

Batch Number: 030223-03

COA released: 03/20/2023 12:06 PM

Potency (mg/mL)

Date Tested: 03/09/2023 Method: CB-SOP-028
Instrument:

0.110 % Total THC	2.751 % Total CBD	3.106 % Total Cannabinoids	28.89 mg/mL Total Cannabinoids
-----------------------------	-----------------------------	--------------------------------------	--

Analyte	Result	Units	LOQ	Result	Units
CBC (Cannabichromene)	0.110	%	0.010	1.019	mg/mL
CBD (Cannabidiol)	2.751	%	0.010	25.58	mg/mL
CBDa (Cannabidiolic Acid)	ND	%	0.010	ND	mg/mL
CBDV (Cannabidivarin)	0.059	%	0.010	0.548	mg/mL
CBG (Cannabigerol)	0.062	%	0.010	0.579	mg/mL
CBGa (Cannabigerolic Acid)	ND	%	0.010	ND	mg/mL
CBN (Cannabinol)	0.014	%	0.010	0.135	mg/mL
D8-THC (D8-Tetrahydrocannabinol)	ND	%	0.010	ND	mg/mL
D9-THC (D9-Tetrahydrocannabinol)	0.110	%	0.010	1.024	mg/mL
THCa (Tetrahydrocannabinolic Acid)	ND	%	0.010	ND	mg/mL

Terpenoids

Date Tested: 03/16/2023 Method: CB-SOP-026
Instrument:

Analyte	Result	Unit	LOQ	Result	Unit
alpha-Bisabolol	<LOQ	mg/g	0.100	<LOQ	%
alpha-humulene	<LOQ	mg/g	0.100	<LOQ	%
alpha-pinene	<LOQ	mg/g	0.100	<LOQ	%
alpha-terpinene	<LOQ	mg/g	0.100	<LOQ	%
beta-caryophyllene	<LOQ	mg/g	0.100	<LOQ	%
Beta-myrcene	<LOQ	mg/g	0.100	<LOQ	%
Beta-pinene	<LOQ	mg/g	0.100	<LOQ	%
cis-Nerolidol	<LOQ	mg/g	0.100	<LOQ	%
Camphene	<LOQ	mg/g	0.100	<LOQ	%
d-Limonene	<LOQ	mg/g	0.100	<LOQ	%
delta-3-Carene	<LOQ	mg/g	0.100	<LOQ	%
Eucalyptol	<LOQ	mg/g	0.100	<LOQ	%
gamma-Terpinene	<LOQ	mg/g	0.100	<LOQ	%
Geraniol	<LOQ	mg/g	0.100	<LOQ	%
Guaiol	<LOQ	mg/g	0.100	<LOQ	%
Isopulegol	<LOQ	mg/g	0.100	<LOQ	%
Linalool	<LOQ	mg/g	0.100	<LOQ	%
Ocimene (mixture of isomers)	<LOQ	mg/g	0.100	<LOQ	%
p-Isopropyltoluene (p-Cymene)	<LOQ	mg/g	0.100	<LOQ	%
trans-beta-Ocimene	<LOQ	mg/g	0.100	<LOQ	%
trans-Nerolidol	<LOQ	mg/g	0.100	<LOQ	%
Terpinolene	<LOQ	mg/g	0.100	<LOQ	%

Pesticides

Date Tested: 03/17/2023 Method: CB-SOP-025 Instrument:

Analyte	Result	Units	LOQ	Result	Analyte	Result	Units	LOQ	Result
Bifentazate	ND	ppm	0.010		Bifenthrin	ND	ppm	0.100	
Boscalid	ND	ppm	0.010		Carbaryl	ND	ppm	0.010	
Carbofuran	ND	ppm	0.010		Chlorantraniliprole	ND	ppm	0.010	
Chlorpyrifos	ND	ppm	0.010		Clofentezine	ND	ppm	0.010	
Coumaphos	ND	ppm	0.010		Daminozide	ND	ppm	0.010	
Diazinon	ND	ppm	0.010		Dichlorvos	ND	ppm	0.100	
Dimethoate	ND	ppm	0.010		Etofenprox	ND	ppm	0.010	
Etoxazole	ND	ppm	0.010		Fenhexamid	ND	ppm	0.010	
Fenoxycarb	ND	ppm	0.010		Fenpyroximate	ND	ppm	0.010	
Fipronil	ND	ppm	0.010		Fonicamid	ND	ppm	0.100	
Fludioxonil	ND	ppm	0.010		Hexythiazox	ND	ppm	0.010	
Imazalil	ND	ppm	0.010		Imidacloprid	ND	ppm	0.010	
Malathion	ND	ppm	0.010		Metalaxyl	ND	ppm	0.010	
Methiocarb	ND	ppm	0.010		Methomyl	ND	ppm	0.010	
Myclobutanil	ND	ppm	0.010		Naled	ND	ppm	0.010	

NT = Not tested, ND = Not detected; LOQ = Limit of Quantitation; <LOQ = Detected; >ULOL = Above upper limit of linearity; CFU/g = Colony forming units per 1 gram; TNTC = Too numerous to count

This product has been tested by CannaBusiness Laboratories using validated testing methodologies and a quality system. Values reported relate only to the product tested. CannaBusiness Laboratories makes no claims as to the efficacy, safety, or other risks associated with any detected or non-detected levels of any compounds reported herein. This Certificate shall not be reproduced except in full, without the written permission of CannaBusiness Laboratories. Photo is of sample received by the lab and may vary from final packaging. The results apply to the sample as received.



Certificate of Analysis

CANNABUSINESS LABORATORIES, LLC

Pesticides								
Date Tested: 03/17/2023			Method: CB-SOP-025			Instrument:		

Analyte	Result	Units	LOQ	Result	Analyte	Result	Units	LOQ	Result
Oxamyl	ND	ppm	0.010		Paclobutrazol	ND	ppm	0.010	
Phosmet	ND	ppm	0.010		Prallethrin	ND	ppm	0.010	
Propiconazole	ND	ppm	0.010		Propoxur	ND	ppm	0.010	
Pyrethrin I	ND	ppm	0.010		Pyrethrin II	ND	ppm	0.010	
Pyridaben	ND	ppm	0.010		Spinetoram	ND	ppm	0.010	
Spiromesifen	ND	ppm	0.010		Spirotetramat	ND	ppm	0.010	
Tebuconazole	ND	ppm	0.010		Thiacloprid	ND	ppm	0.010	
Thiamethoxam	ND	ppm	0.010		Trifloxystrobin	ND	ppm	0.010	
Ethoprophos	ND	ppm	0.010		Kresoxym-methyl	ND	ppm	0.010	
Permethrins	ND	ppm	0.010		Piperonyl Butoxide	ND	ppm	0.010	
Spinosyn A	ND	ppm	0.010		Spiroxamine-1	ND	ppm	0.010	
AbamectinB1a	ND	ppm	0.010		Spinosyn D	ND	ppm	0.010	
Acephate	ND	ppm	0.010		Acetamiprid	ND	ppm	0.010	
Aldicarb	ND	ppm	0.010		Azoxystrobin	ND	ppm	0.010	

Mycotoxins								
Date Tested: 03/17/2023			Method: CB-SOP-025			Instrument:		

Analyte	Result	Units	LOQ	Result	Analyte	Result	Units	LOQ	Result
Ochratoxin A	ND	ppm	0.010		Aflatoxin B1	ND	ppm	0.010	
Aflatoxin G2	ND	ppm	0.010		Aflatoxin B2	ND	ppm	0.010	
Aflatoxin G1	ND	ppm	0.010						

Metals								
Date Tested: 03/15/2023			Method: CB-SOP-027			Instrument:		

Analyte	Result	Units	LOQ	Result	Analyte	Result	Units	LOQ	Result
Arsenic	<LOQ	ppm	0.500		Cadmium	<LOQ	ppm	0.500	
Lead	<LOQ	ppm	0.500		Mercury	<LOQ	ppm	3.000	

Microbial								
Date Tested: 03/16/2023			Method:			Instrument:		

Analyte	Result	Units	LOQ	Result	Analyte	Result	Units	LOQ	Result
STEC (E. coli)	Negative				Salmonella	Negative			
L. monocytogenes	Negative				Yeast/Mold (qPCR)	0	CFUs		

Residual Solvent								
Date Tested: 03/18/2023			Method: CB-SOP-032			Instrument:		

Analyte	Result	Units	LOQ	Result	Analyte	Result	Units	LOQ	Result
1-4 Dioxane	<LOQ	ppm	29		2-Butanol	<LOQ	ppm	175	
2-Ethoxyethanol	<LOQ	ppm	24		2-Methylpentane	<LOQ	ppm	87	
3-Methylpentane	<LOQ	ppm	87		2-Propanol	<LOQ	ppm	350	
Cyclohexane	<LOQ	ppm	146		Ether	<LOQ	ppm	350	
Ethylbenzene	<LOQ	ppm	81		Acetone	<LOQ	ppm	350	
Isopropyl Acetate	<LOQ	ppm	175		Methylbutane	<LOQ	ppm	350	
n-Heptane	<LOQ	ppm	350		n-Hexane	<LOQ	ppm	87	
n-Pentane	<LOQ	ppm	350		Tetrahydrofuran	<LOQ	ppm	54	
Acetonitrile	<LOQ	ppm	123		Ethanol	<LOQ	ppm	350	
Ethyl acetate	<LOQ	ppm	175		o-Xylene	<LOQ	ppm	81	
m+p-Xylene	<LOQ	ppm	163		Methanol	<LOQ	ppm	250	
Methylene Chloride	<LOQ	ppm	90		Toluene	<LOQ	ppm	67	

NT = Not tested, ND = Not detected; LOQ = Limit of Quantitation; <LOQ = Detected; >ULOL = Above upper limit of linearity; CFU/g = Colony forming units per 1 gram; TNTC = Too numerous to count

This product has been tested by CannaBusiness Laboratories using validated testing methodologies and a quality system. Values reported relate only to the product tested. CannaBusiness Laboratories makes no claims as to the efficacy, safety, or other risks associated with any detected or non-detected levels of any compounds reported herein. This Certificate shall not be reproduced except in full, without the written permission of CannaBusiness Laboratories. Photo is of sample received by the lab and may vary from final packaging. The results apply to the sample as received.



Certificate of Analysis

CANNABUSINESS LABORATORIES, LLC




Laboratory Manager

Jamie Hobgood

03/20/2023 12:06 PM

SIGNATURE

DATE

NT = Not tested; ND = Not detected; LOQ = Limit of Quantitation; <LOQ = Detected; >ULOL = Above upper limit of linearity; CFU/g = Colony forming units per 1 gram; TNTC = Too numerous to count

This product has been tested by CannaBusiness Laboratories using validated testing methodologies and a quality system. Values reported relate only to the product tested. CannaBusiness Laboratories makes no claims as to the efficacy, safety, or other risks associated with any detected or non-detected levels of any compounds reported herein. This Certificate shall not be reproduced except in full, without the written permission of CannaBusiness Laboratories. Photo is of sample received by the lab and may vary from final packaging. The results apply to the sample as received.