



CannaBusiness Laboratories, LLC

2554 Palumbo Dr. Lexington, KY 40509

Certificate of Analysis

Customer:

AD Remedies, Inc
6339 Charlotte Pike #914

Nashville, TN 37209

Collected Date:

Received Date: **5/10/2021**

COA Released: **5/12/2021**

Comments:

Sample ID: **210510027**

Order Number: **CB210510016**

Sample Name: **Treatibles 500mg PB
Flavor Dropper**

External Sample ID:

Batch Number: **08562-12**

Product Type: **Concentrate**

Sample Type: **Concentrate**

CANNABINOID PROFILE

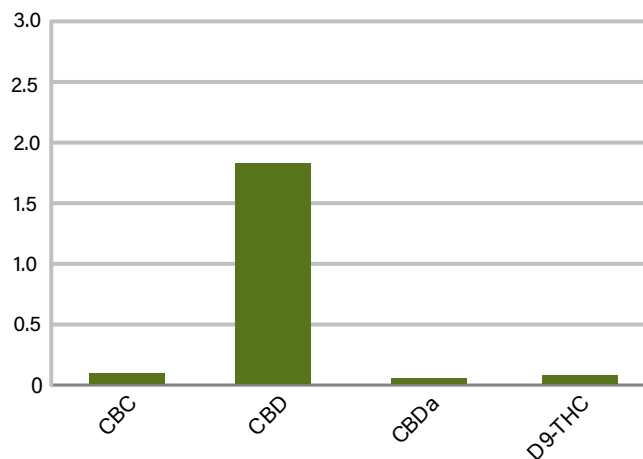
Analyte	LOQ (%)	% weight	mg/g
CBC	0.01	0.038	0.380
CBD	0.01	1.834	18.34
CBDa	0.01	0.022	0.220
CBDV	0.01	ND	ND
CBG	0.01	ND	ND
CBGa	0.01	ND	ND
CBN	0.01	ND	ND
d8-THC	0.01	ND	ND
d9-THC	0.01	0.033	0.330
THCa	0.01	ND	ND
Total Cannabinoids		1.93	19.27
Total Potential THC		0.033	0.330
Total Potential CBD		1.834	18.34
Total Potential CBG		N/A	N/A

Ratio of Total Potential CBD to Total Potential THC 31.91 : 1

Ratio of Total Potential CBG to Total Potential THC N/A



Cannabinoids (% weight)



**Total Cannabinoids refers to the sum of all cannabinoids detected.*

**Total Potential CBD = (0.877 x CBDa) + CBD. *Total Potential THC = (0.877 x THCa) + THC. *Total Potential CBG = (0.877 x CBGa) + CBG.*

**Total Potential THC/CBD are calculated to take into account the loss of an acid group during decarboxylation.*

This product has been tested by CannaBusiness Laboratories using validated testing methodologies and a quality system. Values reported relate only to the product tested. CannaBusiness Laboratories makes no claims as to the efficacy, safety, or other risks associated with any detected or non-detected levels of any compounds reported herein. This Certificate shall not be reproduced except in full, without the written permission of CannaBusiness Laboratories. Uncertainty information is available on request. Photo is of sample received by the lab and may vary from final packaging. The results apply to the sample as received. ISO/IEC 17025:2017 Accredited.

Page 1 of 2



CannaBusiness Laboratories, LLC
2554 Palumbo Dr. Lexington, KY 40509

Sample ID: 210510027
Sample Name: Treatables 500mg PB Flavor Dropper
Sample Type: Concentrate

Certificate of Analysis

Customer

AD Remedies, Inc
6339 Charlotte Pike #914
Nashville, TN 37209



Overall Batch Results

Pesticide	Moisture Content
Potency	Water Activity
Mycotoxins	Heavy Metals
Microbial Screen	Residual Solvents
Terpenoids	

Sample Name: Treatables 500mg PB Flavor Dropper

Sample ID: 210510027

Product Type: Concentrate

Sample Type: Concentrate

Collected Date:

Received Date: 05/10/2021

Batch Number: 08562-12

Batch Size:

Sample Size:

COA released: 5/12/2021

Potency (mg/g)

Date Tested: 05/11/2021

Method: CB-SOP-028

Instrument:

0.033 %	1.834 %	1.930 %	19.27 mg/g
Total THC	Total CBD	Total Cannabinoids	Total Cannabinoids

Analyte	Result	Units	LOQ	Result	Units
CBC (Cannabichromene)	0.038	%	0.010	0.380	mg/g
CBD (Cannabidiol)	1.834	%	0.010	18.34	mg/g
CBDa (Cannabidiolic Acid)	0.022	%	0.010	0.220	mg/g
CBDV (Cannabidivarin)	ND	%	0.010	ND	mg/g
CBG (Cannabigerol)	ND	%	0.010	ND	mg/g
CBGa (Cannabigerolic Acid)	ND	%	0.010	ND	mg/g
CBN (Cannabinol)	ND	%	0.010	ND	mg/g
D8-THC (D8-Tetrahydrocannabinol)	ND	%	0.010	ND	mg/g
D9-THC (D9-Tetrahydrocannabinol)	0.033	%	0.010	0.330	mg/g
THCa (Tetrahydrocannabinolic Acid)	ND	%	0.010	ND	mg/g

Terpenoids

Date Tested: 05/11/2021

Method: CB-SOP-026

Instrument:

Analyte	Result	Unit	LOQ	Result	Unit
alpha-Bisabolol	<LOQ	mg/g	0.100	<LOQ	%
alpha-humulene	<LOQ	mg/g	0.100	<LOQ	%
alpha-pinene	<LOQ	mg/g	0.100	<LOQ	%
alpha-terpinene	<LOQ	mg/g	0.100	<LOQ	%
beta-caryophyllene	<LOQ	mg/g	0.100	<LOQ	%
Beta-myrcene	<LOQ	mg/g	0.100	<LOQ	%
Beta-pinene	<LOQ	mg/g	0.100	<LOQ	%
cis-Nerolidol	<LOQ	mg/g	0.100	<LOQ	%
Camphene	<LOQ	mg/g	0.100	<LOQ	%
d-Limonene	<LOQ	mg/g	0.100	<LOQ	%
delta-3-Carene	<LOQ	mg/g	0.100	<LOQ	%
Eucalyptol	<LOQ	mg/g	0.100	<LOQ	%
gamma-Terpinene	<LOQ	mg/g	0.100	<LOQ	%
Geraniol	<LOQ	mg/g	0.100	<LOQ	%
Guaiol	<LOQ	mg/g	0.100	<LOQ	%
Isopulegol	<LOQ	mg/g	0.100	<LOQ	%
Linalool	<LOQ	mg/g	0.100	<LOQ	%
Ocimene (mixture of isomers)	<LOQ	mg/g	0.100	<LOQ	%
p-Isopropyltoluene (p-Cymene)	<LOQ	mg/g	0.100	<LOQ	%
trans-beta-Ocimene	<LOQ	mg/g	0.100	<LOQ	%
trans-Nerolidol	<LOQ	mg/g	0.100	<LOQ	%
Terpinolene	<LOQ	mg/g	0.100	<LOQ	%

Pesticides

NT = Not tested, ND = Not detected; LOQ = Limit of Quantitation; <LOQ = Detected; >ULOL = Above upper limit of linearity; CFU/g = Colony forming units per 1 gram; TNTC = Too numerous to count

CannaBusiness Laboratories
License # P-0059: (859) 514- 6999 <https://www.cannabusinesslabs.us>

This product has been tested by CannaBusiness Laboratories using validated testing methodologies and a quality system. Values reported relate only to the product tested. CannaBusiness Laboratories makes no claims as to the efficacy, safety, or other risks associated with any detected or non-detected levels of any compounds reported herein. This Certificate shall not be reproduced except in full, without the written permission of CannaBusiness Laboratories. Uncertainty information is available on request. Photo is of sample received by the lab and may vary from final packaging. The results apply to the sample as received. ISO/IEC 17025:2017 Accredited.